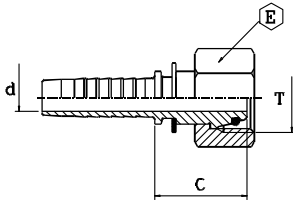

CEL DIN 3853

part nr. codice	hose ID			thread T	d		E		pipe		cut-off C	
	[in]	[mm]	size		[in]	[mm]	[in]	[mm]	[in]	[mm]	[in]	[mm]
0405030312	3/16"	4,8	03	M12-1,5	0,12	3,0	0,55	14	0,24	6,0	0,87	22,0
0405030412	1/4"	6,4	04	M12-1,5	0,16	4,0	0,55	14	0,24	6,0	0,91	23,0
0405030414	1/4"	6,4	04	M14-1,5	0,16	4,0	0,59	15	0,32	8,0	0,87	22,0
0405030416	1/4"	6,4	04	M16-1,5	0,16	4,0	0,67	17	0,39	10,0	0,91	23,0
0405030418	1/4"	6,4	04	M18-1,5	0,16	4,0	0,75	19	0,47	12,0	0,95	24,0
0405030516	5/16"	8,0	05	M16-1,5	0,22	5,5	0,67	17	0,39	10,0	0,91	23,0
0405030518	5/16"	8,0	05	M18-1,5	0,22	5,5	0,75	19	0,47	12,0	0,95	24,0
0405030616	3/8"	9,5	06	M16-1,5	0,28	7,0	0,67	17	0,39	10,0	0,91	23,0
0405030618	3/8"	9,5	06	M18-1,5	0,28	7,0	0,75	19	0,47	12,0	0,95	24,0
0405030622	3/8"	9,5	06	M22-1,5	0,28	7,0	0,87	22	0,59	15,0	0,99	25,0
0405030818	1/2"	12,7	08	M18-1,5	0,37	9,5	0,75	19	0,47	12,0	0,99	25,0
0405030822	1/2"	12,7	08	M22-1,5	0,37	9,5	0,87	22	0,59	15,0	1,02	26,0
0405030826	1/2"	12,7	08	M26-1,5	0,37	9,5	1,06	27	0,71	18,0	1,06	27,0
0405031026	5/8"	16,0	10	M26-1,5	0,47	12,0	1,06	27	0,71	18,0	1,06	27,0
0405031226	3/4"	19,0	12	M26-1,5	0,59	15,0	1,06	27	0,71	18,0	1,10	28,0
0405031230	3/4"	19,0	12	M30-2	0,59	15,0	1,18	30	0,87	22,0	1,30	33,0
0405031636	1"	25,4	16	M36-2	0,79	20,0	1,42	36	1,10	28,0	1,26	32,0
0405032045	1.1/4"	31,8	20	M45-2	1,02	26,0	1,81	46	1,38	35,0	1,42	36,0
0405032452	1.1/2"	38,1	24	M52-2	1,26	32,0	2,17	55	1,65	42,0	1,50	38,0

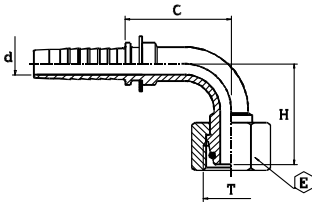
**METRIC FEMALE 24° FLARE
 LIGHT**
**FEMMINA METRICA SV.24° LEGGERO -
 DKOL**

DKOL DIN 3865

part nr. codice	hose ID		size	thread T	d		E		[in]	[mm]	[in]	[mm]
	[in]	[mm]			[in]	[mm]	[in]	[mm]				
0422240312	3/16"	4,8	03	M12-1,5	0,12	3,0	0,55	14	0,24	6,0	0,91	23,0
0422240314	3/16"	4,8	03	M14-1,5	0,12	3,0	0,67	17	0,32	8,0	0,91	23,0
*0422240412	1/4"	6,4	04	M12-1,5	0,16	4,0	0,55	14	0,24	6,0	0,79	20,0
0422240414	1/4"	6,4	04	M14-1,5	0,16	4,0	0,67	17	0,32	8,0	0,91	23,0
0422240416	1/4"	6,4	04	M16-1,5	0,16	4,0	0,75	19	0,39	10,0	0,91	23,0
0422240418	1/4"	6,4	04	M18-1,5	0,16	4,0	0,87	22	0,47	12,0	0,95	24,0
0422240516	5/16"	8,0	05	M16-1,5	0,22	5,5	0,75	19	0,39	10,0	0,91	23,0
*0422240616	3/8"	9,5	06	M16-1,5	0,28	7,0	0,75	19	0,39	10,0	0,99	25,0
0422240618	3/8"	9,5	06	M18-1,5	0,28	7,0	0,87	22	0,47	12,0	0,95	24,0
0422240622	3/8"	9,5	06	M22-1,5	0,28	7,0	1,06	27	0,59	15,0	1,10	28,0
0422240822	1/2"	12,7	08	M22-1,5	0,37	9,5	1,06	27	0,59	15,0	1,10	28,0
0422240826	1/2"	12,7	08	M26-1,5	0,37	9,5	1,26	32	0,71	18,0	1,10	28,0
0422241026	5/8"	16,0	10	M26-1,5	0,47	12,0	1,26	32	0,71	18,0	1,14	29,0
0422241230	3/4"	19,0	12	M30-2	0,59	15,0	1,42	36	0,87	22,0	1,14	29,0
0422241636	1"	25,4	16	M36-2	0,79	20,0	1,62	41	1,10	28,0	1,18	30,0
0422242045	1.1/4"	31,8	20	M45-2	1,02	26,0	1,97	50	1,38	35,0	1,58	40,0
0422242452	1.1/2"	38,1	24	M52-2	1,26	32,0	2,36	60	1,65	42,0	1,62	41,0

* WITH CRIMPED NUT / CON DADO PINZATO

METRIC FEMALE 24° FLARE LIGHT
90° ELBOW

FEMMINA 90° METRICA SV.24° LEGGERO
90° ELBOW



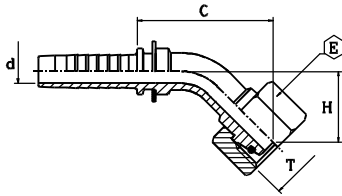
DKOL 90° DIN 3865

part nr. codice	hose ID			thread T	d		E		pipe		cut-off C		drop H	
	[in]	[mm]	size		[in]	[mm]	[in]	[mm]	[in]	[mm]	[in]	[mm]	[in]	[mm]
0434240312	3/16"	4,8	03	M12-1,5	0,12	3,0	0,55	14	0,24	6,0	0,99	25,0	0,95	24,0
0434240314	3/16"	4,8	03	M14-1,5	0,12	3,0	0,67	17	0,32	8,0	0,99	25,0	1,10	28,0
0434240414	1/4"	6,4	04	M14-1,5	0,16	4,0	0,67	17	0,32	8,0	1,06	27,0	1,26	32,0
0434240416	1/4"	6,4	04	M16-1,5	0,16	4,0	0,75	19	0,39	10,0	1,10	28,0	1,06	27,0
0434240418	1/4"	6,4	04	M18-1,5	0,16	4,0	0,87	22	0,47	12,0	1,02	26,0	1,22	31,0
0434240516	5/16"	8,0	05	M16-1,5	0,22	5,5	0,75	19	0,39	10,0	1,34	34,0	1,22	31,0
*0434240616	3/8"	9,5	06	M16-1,5	0,28	7,0	0,75	19	0,39	10,0	1,26	32,0	1,18	30,0
0434240618	3/8"	9,5	06	M18-1,5	0,28	7,0	0,87	22	0,47	12,0	1,26	32,0	1,58	40,0
0434240622	3/8"	9,5	06	M22-1,5	0,28	7,0	1,06	27	0,59	15,0	1,30	33,0	1,89	48,0
0434240822	1/2"	12,7	08	M22-1,5	0,37	9,5	1,06	27	0,59	15,0	1,69	43,0	1,42	39,0
0434240826	1/2"	12,7	08	M26-1,5	0,37	9,5	1,26	32	0,71	18,0	1,69	43,0	1,58	40,0
0434241026	5/8"	16,0	10	M26-1,5	0,47	12,0	1,26	32	0,71	18,0	1,81	46,0	2,09	53,0
*0434241226	3/4"	19,0	12	M26-1,5	0,59	15,0	1,26	32	0,71	18,0	2,25	57,0	2,52	64,0
0434241230	3/4"	19,0	12	M30-2	0,59	15,0	1,42	36	0,87	22,0	2,25	57,0	1,97	50,0
0434241636	1"	25,4	16	M36-2	0,79	20,0	1,62	41	1,10	28,0	2,84	72,0	2,29	58,0
0434242045	1.1/4"	31,8	20	M45-2	1,02	26,0	1,97	50	1,38	35,0	3,27	83,0	3,19	81,0
0434242452	1.1/2"	38,1	24	M52-2	1,26	32,0	2,17	55	1,65	42,0	3,94	100,0	3,66	93,0

* WITH CRIMPED NUT / CON DADO PINZATO

**METRIC FEMALE 24° FLARE
LIGHT 45° ELBOW**

**FEMMINA 45° METRICA SV.24°
LEGGERO**



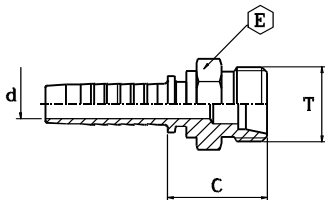
DKOL 45° DIN 3865

part nr. codice	hose ID			thread T	d		E		pipe		cut-off C		drop H	
	[in]	[mm]	size		[in]	[mm]	[in]	[mm]	[in]	[mm]	[in]	[mm]	[in]	[mm]
0436240312	3/16"	4,8	03	M12-1,5	0,12	3,0	0,55	14	0,24	6,0	1,69	43,0	0,55	14,0
0436240414	1/4"	6,4	04	M14-1,5	0,16	4,0	0,67	17	0,32	8,0	1,81	46,0	0,67	17,0
0436240416	1/4"	6,4	04	M16-1,5	0,16	4,0	0,75	19	0,39	10,0	1,81	46,0	0,67	17,0
0436240418	1/4"	6,4	04	M18-1,5	0,16	4,0	0,87	22	0,47	12,0	1,73	44,0	0,67	17,0
0436240516	5/16"	8,0	05	M16-1,5	0,22	5,5	0,75	19	0,39	10,0	1,93	49,0	0,63	16,0
0436240618	3/8"	9,5	06	M18-1,5	0,28	7,0	0,87	22	0,47	12,0	1,73	44,0	0,75	19,0
0436240622	3/8"	9,5	06	M22-1,5	0,28	7,0	1,06	27	0,59	15,0	2,05	52,0	0,71	18,0
0436240822	1/2"	12,7	08	M22-1,5	0,37	9,5	1,06	27	0,59	15,0	1,85	47,0	0,91	23,0
0436241026	5/8"	16,0	10	M26-1,5	0,47	12,0	1,26	32	0,71	18,0	2,72	69,0	0,91	23,0
*0436241226	3/4"	19,0	12	M26-1,5	0,59	15,0	1,26	32	0,71	18,0	3,35	85,0	0,99	25,0
0436241230	3/4"	19,0	12	M30-2	0,59	15,0	1,42	36	0,87	22,0	3,31	84,0	1,18	30,0
0436241636	1"	25,4	16	M36-2	0,79	20,0	1,62	41	1,10	28,0	3,15	80,0	1,38	35,0
0436242045	1.1/4"	31,8	20	M45-2	1,02	26,0	1,97	50	1,38	35,0	3,94	100,0	1,77	45,0
0436242452	1.1/2"	38,1	24	M52-2	1,26	32,0	2,36	60	1,65	42,0	4,37	111,0	1,97	50,0

* WITH CRIMPED NUT / CON DADO PINZATO

METRIC MALE 24° FLARE HEAVY

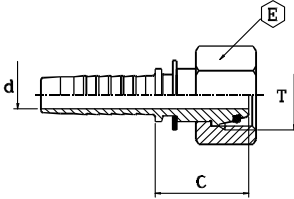
MASCHIO METRICO SV.24° PESANTE



CES DIN 3853

part nr. codice	hose ID			thread T	d		E		pipe		cut-off C	
	[in]	[mm]	size		[in]	[mm]	[in]	[mm]	[in]	[mm]	[in]	[mm]
0406030316	3/16"	4,8	03	M16-1,5	0,12	3,0	0,67	17	0,32	8,0	1,02	26,0
0406030416	1/4"	6,4	04	M16-1,5	0,16	4,0	0,67	17	0,32	8,0	1,06	27,0
0406030418	1/4"	6,4	04	M18-1,5	0,16	4,0	0,75	19	0,39	10,0	1,06	27,0
0406030420	1/4"	6,4	04	M20-1,5	0,16	4,0	0,87	22	0,47	12,0	1,14	29,0
0406030520	5/16"	8,0	05	M20-1,5	0,22	5,5	0,87	22	0,47	12,0	1,14	29,0
0406030618	3/8"	9,5	06	M18-1,5	0,28	7,0	0,87	22	0,39	10,0	1,06	27,0
0406030620	3/8"	9,5	06	M20-1,5	0,28	7,0	0,87	22	0,47	12,0	1,14	29,0
0406030622	3/8"	9,5	06	M22-1,5	0,28	7,0	0,87	22	0,55	14,0	1,22	31,0
0406030624	3/8"	9,5	06	M24-1,5	0,28	7,0	0,95	24	0,63	16,0	1,22	31,0
0406030824	1/2"	12,7	08	M24-1,5	0,37	9,5	0,95	24	0,63	16,0	1,26	32,0
0406031030	5/8"	16,0	10	M30-2	0,47	12,0	1,18	30	0,79	20,0	1,34	34,0
0406031230	3/4"	19,0	12	M30-2	0,59	15,0	1,18	30	0,79	20,0	1,38	35,0
0406031236	3/4"	19,0	12	M36-2	0,59	15,0	1,42	36	0,99	25,0	1,50	38,0
0406031636	1"	25,4	16	M36-2	0,79	20,0	1,42	36	0,99	25,0	1,54	39,0
0406031642	1"	25,4	16	M42-2	0,79	20,0	1,81	46	1,18	30,0	1,65	42,0
0406032042	1.1/4"	31,8	20	M42-2	1,02	26,0	1,81	46	1,18	30,0	1,69	43,0
0406032052	1.1/4"	31,8	20	M52-2	1,02	26,0	2,17	55	1,50	38,0	1,97	50,0
0406032452	1.1/2"	38,1	24	M52-2	1,26	32,0	2,17	55	1,50	38,0	1,97	50,0

METRIC FEMALE 24° FLARE HEAVY FEMMINA METRICA SV.24° PESANTE

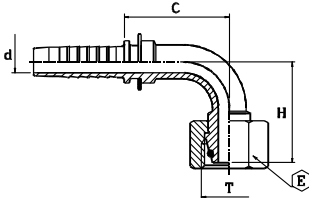


DKOS DIN 3865

part nr. codice	hose ID		size	thread T	d		E		pipe		cut-off C	
	[in]	[mm]			[in]	[mm]	[in]	[mm]	[in]	[mm]	[in]	[mm]
0423240316	3/16"	4,8	03	M16-1,5	0,12	3,0	0,75	19	0,32	8,0	0,99	25,0
0423240416	1/4"	6,4	04	M16-1,5	0,16	4,0	0,75	19	0,32	8,0	0,99	25,0
0423240418	1/4"	6,4	04	M18-1,5	0,16	4,0	0,87	22	0,39	10,0	0,95	24,0
0423240518	5/16"	8,0	05	M18-1,5	0,22	5,5	0,87	22	0,39	10,0	0,95	24,0
0423240520	5/16"	8,0	05	M20-1,5	0,22	5,5	0,95	24	0,47	12,0	1,02	26,0
0423240618	3/8"	9,5	06	M18-1,5	0,28	7,0	0,87	22	0,39	10,0	0,95	24,0
0423240620	3/8"	9,5	06	M20-1,5	0,28	7,0	0,95	24	0,47	12,0	1,02	26,0
0423240622	3/8"	9,5	06	M22-1,5	0,28	7,0	1,06	27	0,55	14,0	1,14	29,0
0423240824	1/2"	12,7	08	M24-1,5	0,37	9,5	1,18	30	0,63	16,0	1,14	29,0
0423241030	5/8"	16,0	10	M30-2	0,47	12,0	1,42	36	0,79	20,0	1,30	33,0
0423241230	3/4"	19,0	12	M30-2	0,59	15,0	1,42	36	0,79	20,0	1,34	34,0
0423241236	3/4"	19,0	12	M36-2	0,59	15,0	1,81	46	0,99	25,0	1,58	40,0
0423241636	1"	25,4	16	M36-2	0,79	20,0	1,81	46	0,99	25,0	1,62	41,0
0423241642	1"	25,4	16	M42-2	0,79	20,0	1,97	50	1,18	30,0	1,69	43,0
0423242052	1.1/4"	31,8	20	M52-2	1,02	26,0	2,36	60	1,50	38,0	1,73	44,0
0423242452	1.1/2"	38,1	24	M52-2	1,26	32,0	2,36	60	1,50	38,0	1,73	44,0

METRIC FEMALE 24° FLARE HEAVY 90° ELBOW

FEMMINA 90° METRICA SV.24° PESANTE DKOS

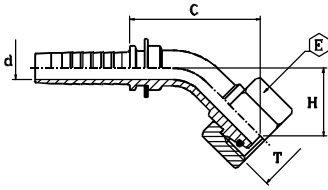


DKOS 90° DIN 3865

part nr. codice	hose ID		size	thread T	d		E		pipe		cut-off C		drop H	
	[in]	[mm]			[in]	[mm]	[in]	[mm]	[in]	[mm]	[in]	[mm]	[in]	[mm]
0438240316	3/16"	4,8	03	M16-1,5	0,12	3,0	0,75	19	0,32	8,0	0,99	25,0	1,02	26,0
0438240416	1/4"	6,4	04	M16-1,5	0,16	4,0	0,75	19	0,32	8,0	1,02	26,0	1,10	28,0
0438240418	1/4"	6,4	04	M18-1,5	0,16	4,0	0,87	22	0,39	10,0	1,06	27,0	1,18	30,0
0438240520	5/16"	8,0	05	M20-1,5	0,22	5,5	0,95	24	0,47	12,0	1,22	31,0	1,38	35,0
0438240618	3/8"	9,5	06	M18-1,5	0,28	7,0	0,87	22	0,39	10,0	1,34	34,0	1,34	34,0
0438240620	3/8"	9,5	06	M20-1,5	0,28	7,0	0,95	24	0,47	12,0	1,34	34,0	1,34	34,0
0438240622	3/8"	9,5	06	M22-1,5	0,28	7,0	1,06	27	0,55	14,0	1,42	36,0	1,42	36,0
0438240824	1/2"	12,7	08	M24-1,5	0,37	9,5	1,18	30	0,63	16,0	1,61	41,0	1,65	42,0
0438241030	5/8"	16,0	10	M30-2	0,47	12,0	1,42	36	0,79	20,0	1,81	46,0	1,97	50,0
0438241230	3/4"	19,0	12	M30-2	0,59	15,0	1,42	36	0,79	20,0	2,29	58,0	2,17	55,0
0438241236	3/4"	19,0	12	M36-2	0,59	15,0	1,81	46	0,99	25,0	2,21	56,0	2,32	59,0
0438241636	1"	25,4	16	M36-2	0,79	20,0	1,81	46	0,99	25,0	2,84	72,0	2,60	66,0
0438241642	1"	25,4	16	M42-2	0,79	20,0	1,97	50	1,18	30,0	2,84	72,0	2,60	66,0
0438242052	1.1/4"	31,8	20	M52-2	1,02	26,0	2,36	60	1,50	38,0	3,39	86,0	3,39	86,0
0438242452	1.1/2"	38,1	24	M52-2	1,26	32,0	2,36	60	1,50	38,0	3,94	100,0	3,70	94,0

METRIC FEMALE 24° FLARE HEAVY
45° ELBOW

FEMMINA 45° METRICA SV.24°
PESANTE DKOS

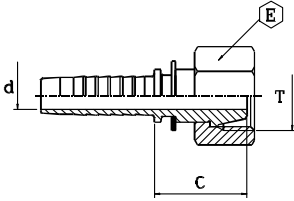


DKOS 45° DIN 3865

part nr. codice	hose ID			thread T	d		E		pipe		cut-off C		drop H	
	[in]	[mm]	size		[in]	[mm]	[in]	[mm]	[in]	[mm]	[in]	[mm]	[in]	[mm]
0440240316	3/16"	4,8	03	M16-1,5	0,12	3,0	0,75	19	0,32	8,0	1,38	35,0	0,63	16,0
0440240416	1/4"	6,4	04	M16-1,5	0,16	4,0	0,75	19	0,32	8,0	1,81	46,0	0,67	17,0
0440240418	1/4"	6,4	04	M18-1,5	0,16	4,0	0,87	22	0,39	10,0	1,85	47,0	0,71	18,0
0440240518	5/16"	8,0	05	M18-1,5	0,22	5,5	0,87	22	0,39	10,0	1,69	43,0	0,75	19,0
0440240520	5/16"	8,0	05	M20-1,5	0,22	5,5	0,95	24	0,47	12,0	1,65	42,0	0,75	19,0
0440240620	3/8"	9,5	06	M20-1,5	0,28	7,0	0,95	24	0,47	12,0	2,05	52,0	0,67	17,0
0440240622	3/8"	9,5	06	M22-1,5	0,28	7,0	1,06	27	0,55	14,0	2,24	57,0	0,75	19,0
0440240824	1/2"	12,7	08	M24-1,5	0,37	9,5	1,18	30	0,63	16,0	2,48	63,0	0,79	20,0
0440241030	5/8"	16,0	10	M30-2	0,47	12,0	1,42	36	0,79	20,0	2,88	73,0	1,06	27,0
0440241230	3/4"	19,0	12	M30-2	0,59	15,0	1,42	36	0,79	20,0	2,88	73,0	1,18	30,0
0440241236	3/4"	19,0	12	M36-2	0,59	15,0	1,81	46	0,99	25,0	2,84	72,0	1,26	32,0
0440241636	1"	25,4	16	M36-2	0,79	20,0	1,81	46	0,99	25,0	3,43	87,0	1,58	40,0
0440241642	1"	25,4	16	M42-2	0,79	20,0	1,97	50	1,18	30,0	3,31	84,0	1,38	35,0
0440242052	1.1/4"	31,8	20	M52-2	1,02	26,0	2,36	60	1,50	38,0	4,14	105,0	1,97	50,0
0440242452	1.1/2"	38,1	24	M52-2	1,26	32,0	2,36	60	1,50	38,0	4,53	115,0	1,89	48,0

**METRIC FEMALE 24°/60° FLARE
LIGHT MULTISEAL**

**FEMMINA METRICA SV.24°/60° LEGGERA
MULTISEAL**

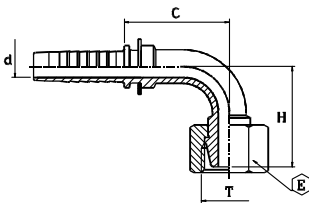


DKL DIN 3868

part nr. codice	hose ID			thread T	d		E		pipe		cut-off C	
	[in]	[mm]	size		[in]	[mm]	[in]	[mm]	[in]	[mm]	[in]	[mm]
0416640312	3/16"	4,8	03	M12-1,5	0,12	3,0	0,55	14	0,24	6,0	0,75	19,0
0416640414	1/4"	6,4	04	M14-1,5	0,16	4,0	0,67	17	0,32	8,0	0,75	19,0
0416640416	1/4"	6,4	04	M16-1,5	0,16	4,0	0,75	19	0,39	10,0	0,75	19,0
0416640516	5/16"	8,0	05	M16-1,5	0,22	5,5	0,75	19	0,39	10,0	0,75	19,0
0416640518	5/16"	8,0	05	M18-1,5	0,22	5,5	0,87	22	0,47	12,0	0,83	21,0
0416640618	3/8"	9,5	06	M18-1,5	0,28	7,0	0,87	22	0,47	12,0	0,83	21,0
0416640622	3/8"	9,5	06	M22-1,5	0,28	7,0	1,06	27	0,59	15,0	0,87	22,0
0416640822	1/2"	12,7	08	M22-1,5	0,37	9,5	1,06	27	0,59	15,0	0,87	22,0
0416641026	5/8"	16,0	10	M26-1,5	0,47	12,0	1,26	32	0,71	18,0	0,95	24,0

**METRIC FEMALE 24°/60° FLARE 90°
ELBOW LIGHT MULTISEAL**

**METRIC FEMALE 24°/60° FLARE 90°
ELBOW LIGHT MULTISEAL**

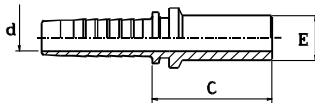


DKL 90° DIN 3868

part nr. codice	hose ID			thread T	d		E		pipe		cut-off C		drop H	
	[in]	[mm]	size		[in]	[mm]	[in]	[mm]	[in]	[mm]	[in]	[mm]	[in]	[mm]
0427640414	1/4"	6,4	04	M14-1,5	0,16	4,0	0,67	17	0,32	8,0	1,22	31,0	1,14	29,0
0427640416	1/4"	6,4	04	M16-1,5	0,16	4,0	0,75	19	0,39	10,0	1,02	26,0	0,91	23,0
0427640516	5/16"	8,0	05	M16-1,5	0,22	5,5	0,75	19	0,39	10,0	1,26	32,0	1,26	32,0
0427640618	3/8"	9,5	06	M18-1,5	0,28	7,0	0,87	22	0,47	12,0	1,30	33,0	1,34	34,0
0427640622	3/8"	9,5	06	M22-1,5	0,28	7,0	1,06	27	0,59	15,0	1,30	33,0	1,18	30,0
0427640822	1/2"	12,7	08	M22-1,5	0,37	9,5	1,06	27	0,59	15,0	1,69	43,0	1,38	35,0
0427641026	5/8"	16,0	10	M26-1,5	0,47	12,0	1,26	32	0,71	18,0	1,81	46,0	1,65	42,0

METRIC STANDPIPE STRAIGHT

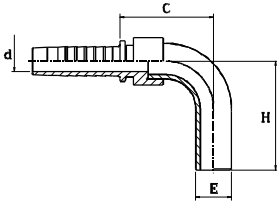
FEMMINA TUBOLARE DIRITTA



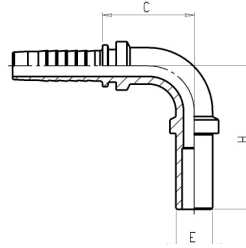
BEL-BES DIN 2353

part nr. codice	hose ID			d		pipe E		cut-off C		type tipo
	[in]	[mm]	size	[in]	[mm]	[in]	[mm]	[in]	[mm]	
0443000306	3/16"	4,8	03	0,12	3,0	0,24	6	1,18	30,0	L/S
0443000308	3/16"	4,8	03	0,12	3,0	0,32	8	1,14	29,0	L/S
0443000406	1/4"	6,4	04	0,16	4,0	0,24	6	1,26	32,0	L/S
0443000408	1/4"	6,4	04	0,16	4,0	0,32	8	1,14	29,0	L/S
0443000410	1/4"	6,4	04	0,16	4,0	0,39	10	1,26	32,0	L/S
0443000412	1/4"	6,4	04	0,16	4,0	0,47	12	1,18	30,0	L/S
0443000508	5/16"	8,0	05	0,22	5,5	0,32	8	1,14	29,0	L/S
0443000510	5/16"	8,0	05	0,22	5,5	0,39	10	1,18	30,0	L/S
0443000512	5/16"	8,0	05	0,22	5,5	0,47	12	1,26	32,0	L/S
0443000610	3/8"	9,5	06	0,28	7,0	0,39	10	1,22	31,0	L/S
0443000612	3/8"	9,5	06	0,28	7,0	0,47	12	1,22	31,0	L/S
0443000614	3/8"	9,5	06	0,28	7,0	0,55	14	1,42	36,0	S
0443000615	3/8"	9,5	06	0,28	7,0	0,59	15	1,26	32,0	L
0443000814	1/2"	12,7	08	0,37	9,5	0,55	14	1,46	37,0	S
0443000815	1/2"	12,7	08	0,37	9,5	0,59	15	1,30	33,0	L
0443000816	1/2"	12,7	08	0,37	9,5	0,63	16	1,50	38,0	S
0443000818	1/2"	12,7	08	0,37	9,5	0,71	18	1,34	34,0	L
0443001018	5/8"	16,0	10	0,47	12,0	0,71	18	1,34	34,0	L
0443001020	5/8"	16,0	10	0,47	12,0	0,79	20	1,73	44,0	S
0443001022	5/8"	16,0	10	0,47	12,0	0,87	22	1,42	36,0	L
0443001218	3/4"	19,0	12	0,59	15,0	0,71	18	1,34	34,0	L
0443001220	3/4"	19,0	12	0,59	15,0	0,79	20	1,77	45,0	S
0443001222	3/4"	19,0	12	0,59	15,0	0,87	22	1,42	36,0	L
0443001225	3/4"	19,0	12	0,59	15,0	0,99	25	1,93	49,0	S
0443001625	1"	25,4	16	0,79	20,0	0,99	25	1,93	49,0	S
0443001628	1"	25,4	16	0,79	20,0	1,10	28	1,54	39,0	L
0443001630	1"	25,4	16	0,79	20,0	1,18	30	2,13	54,0	S
0443002030	1.1/4"	31,8	20	1,02	26,0	1,18	30	2,17	55,0	S
0443002035	1.1/4"	31,8	20	1,02	26,0	1,38	35	1,85	47,0	L
0443002038	1.1/4"	31,8	20	1,02	26,0	1,50	38	2,40	61,0	S
0443002438	1.1/2"	38,1	24	1,26	32,0	1,50	38	2,40	61,0	S
0443002442	1.1/2"	38,1	24	1,26	32,0	1,65	42	1,93	49,0	L

METRIC STANDPIPE 90° ELBOW - WELDED
FEMMINA 90° TUBOLARE SALDATA
04440



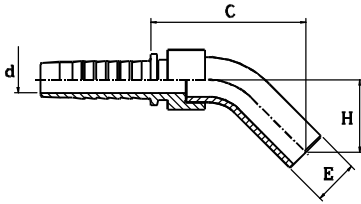
METRIC STANDPIPE 90° ELBOW - ONE PIECE
FEMMINA 90° TUBOLARE PEZZO UNICO
04441



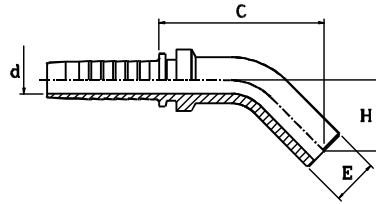
BEL-BES 90° DIN 2353

part nr. codice	hose ID			d		pipe E		cut-off C		drop H		type tipo
	[in]	[mm]	size	[in]	[mm]	[in]	[mm]	[in]	[mm]	[in]	[mm]	
0444100306	3/16"	4,8	03	0,12	3,0	0,24	6,0	0,79	20,0	1,50	38,0	L/S
0444000308	3/16"	4,8	03	0,12	3,0	0,32	8,0	0,95	24,0	1,54	39,0	L/S
0444100406	1/4"	6,4	04	0,16	4,0	0,24	6,0	0,95	24,0	1,57	40,0	L/S
0444100408	1/4"	6,4	04	0,16	4,0	0,32	8,0	0,95	24,0	1,57	40,0	L/S
0444100410	1/4"	6,4	04	0,16	4,0	0,39	10,0	0,95	24,0	1,57	40,0	L/S
0444000412	1/4"	6,4	04	0,16	4,0	0,47	12,0	0,99	25,0	1,77	45,0	L/S
0444000510	5/16"	8,0	05	0,22	5,5	0,39	10,0	1,14	29,0	1,65	42,0	L/S
0444000512	5/16"	8,0	05	0,22	5,5	0,47	12,0	1,14	29,0	1,77	45,0	L/S
0444100610	3/8"	9,5	06	0,28	7,0	0,39	10,0	1,18	30,0	1,85	47,0	L/S
0444100612	3/8"	9,5	06	0,28	7,0	0,47	12,0	1,18	30,0	1,85	47,0	L/S
0444000614	3/8"	9,5	06	0,28	7,0	0,55	14,0	1,30	33,0	1,93	49,0	S
0444100615	3/8"	9,5	06	0,28	7,0	0,59	15,0	1,50	38,0	2,09	53,0	L
0444000814	1/2"	12,7	08	0,37	9,5	0,55	14,0	1,34	34,0	1,93	49,0	S
0444100815	1/2"	12,7	08	0,37	9,5	0,59	15,0	1,49	38,0	2,09	53,0	L
0444000816	1/2"	12,7	08	0,37	9,5	0,63	16,0	1,65	42,0	2,21	56,0	S
0444000818	1/2"	12,7	08	0,37	9,5	0,71	18,0	1,65	42,0	2,21	56,0	L
0444001018	5/8"	16,0	10	0,47	12,0	0,71	18,0	1,65	42,0	2,21	56,0	L
0444001020	5/8"	16,0	10	0,47	12,0	0,79	20,0	1,85	47,0	2,56	65,0	S
0444001022	5/8"	16,0	10	0,47	12,0	0,87	22,0	2,09	53,0	2,76	70,0	L
0444001220	3/4"	19,0	12	0,59	15,0	0,79	20,0	1,89	48,0	2,56	65,0	S
0444001222	3/4"	19,0	12	0,59	15,0	0,87	22,0	2,09	53,0	2,76	70,0	L
0444001225	3/4"	19,0	12	0,59	15,0	0,99	25,0	2,21	56,0	2,96	75,0	S
0444001625	1"	25,4	16	0,79	20,0	0,99	25,0	2,36	60,0	2,96	75,0	S
0444001628	1"	25,4	16	0,79	20,0	1,10	28,0	2,64	67,0	3,27	83,0	L
0444001630	1"	25,4	16	0,79	20,0	1,18	30,0	2,68	68,0	3,47	88,0	S
0444002030	1.1/4"	31,8	20	1,02	26,0	1,18	30,0	2,64	67,0	3,47	88,0	S
0444002035	1.1/4"	31,8	20	1,02	26,0	1,38	35,0	3,03	77,0	3,78	96,0	L
0444002038	1.1/4"	31,8	20	1,02	26,0	1,50	38,0	3,19	81,0	4,14	105,0	S
0444002438	1.1/2"	38,1	24	1,26	32,0	1,50	38,0	3,19	81,0	4,14	105,0	S
0444002442	1.1/2"	38,1	24	1,26	32,0	1,65	42,0	3,59	91,0	4,53	115,0	L

METRIC STANDPIPE 45° ELBOW - WELDED
FEMMINA 45° TUBOLARE SALDATA



METRIC STANDPIPE 45° ELBOW - ONE PIECE
FEMMINA 45° TUBOLARE PEZZO UNICO

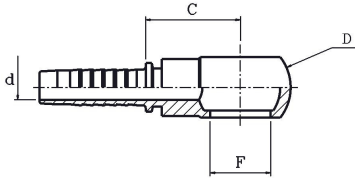


BEL-BES 45° DIN 2353

part nr. codice	hose ID			d		pipe E		cut-off C		drop H		type tipo
	[in]	[mm]	size	[in]	[mm]	[in]	[mm]	[in]	[mm]	[in]	[mm]	
0445000306	3/16"	4,8	03	0,12	3,0	0,24	6,0	1,62	41,0	0,79	20,0	L/S
0445000308	3/16"	4,8	03	0,12	3,0	0,32	8,0	1,73	44,0	0,91	23,0	L/S
0445000406	1/4"	6,4	04	0,16	4,0	0,24	6,0	1,65	42,0	1,18	30,0	L/S
0445000408	1/4"	6,4	04	0,16	4,0	0,32	8,0	1,62	41,0	1,14	29,0	L/S
0445000410	1/4"	6,4	04	0,16	4,0	0,39	10,0	1,65	42,0	1,18	30,0	L/S
0445000412	1/4"	6,4	04	0,16	4,0	0,47	12,0	1,65	42,0	1,18	30,0	L/S
0445000510	5/16"	8,0	05	0,22	5,5	0,39	10,0	1,97	50,0	0,99	25,0	L/S
0445000512	5/16"	8,0	05	0,22	5,5	0,47	12,0	2,09	53,0	1,02	26,0	L/S
0445000610	3/8"	9,5	06	0,28	7,0	0,39	10,0	2,01	51,0	1,34	34,0	L/S
0445000612	3/8"	9,5	06	0,28	7,0	0,47	12,0	2,13	54,0	1,34	34,0	L/S
0445000614	3/8"	9,5	06	0,28	7,0	0,55	14,0	2,01	51,0	1,06	27,0	S
0445000615	3/8"	9,5	06	0,28	7,0	0,59	15,0	2,17	55,0	1,10	28,0	L
0445000814	1/2"	12,7	08	0,37	9,5	0,55	14,0	2,05	52,0	1,06	27,0	S
0445000815	1/2"	12,7	08	0,37	9,5	0,59	15,0	2,21	56,0	1,10	28,0	L
0445000816	1/2"	12,7	08	0,37	9,5	0,63	16,0	2,17	55,0	1,10	28,0	S
0445000818	1/2"	12,7	08	0,37	9,5	0,71	18,0	2,32	59,0	1,22	31,0	L
0445001018	5/8"	16,0	10	0,47	12,0	0,71	18,0	2,32	59,0	1,22	31,0	L
0445001020	5/8"	16,0	10	0,47	12,0	0,79	20,0	2,56	65,0	1,30	33,0	S
0445001022	5/8"	16,0	10	0,47	12,0	0,87	22,0	2,68	68,0	1,38	35,0	L
0445001220	3/4"	19,0	12	0,59	15,0	0,79	20,0	2,60	66,0	1,30	33,0	S
0445001222	3/4"	19,0	12	0,59	15,0	0,87	22,0	2,64	67,0	1,38	35,0	L
0445001225	3/4"	19,0	12	0,59	15,0	0,99	25,0	3,03	77,0	1,54	39,0	S
0445001625	1"	25,4	16	0,79	20,0	0,99	25,0	3,19	81,0	1,54	39,0	S
0445001628	1"	25,4	16	0,79	20,0	1,10	28,0	3,62	92,0	1,50	38,0	L
0445001630	1"	25,4	16	0,79	20,0	1,18	30,0	3,59	91,0	1,73	44,0	S
0445002030	1.1/4"	31,8	20	1,02	26,0	1,18	30,0	3,59	91,0	1,73	44,0	S
0445002035	1.1/4"	31,8	20	1,02	26,0	1,38	35,0	3,82	97,0	1,81	46,0	L
0445002038	1.1/4"	31,8	20	1,02	26,0	1,50	38,0	4,06	103,0	2,01	51,0	S
0445002438	1.1/2"	38,1	24	1,26	32,0	1,50	38,0	4,06	103,0	2,01	51,0	S
0445002442	1.1/2"	38,1	24	1,26	32,0	1,65	42,0	4,45	113,0	3,62	92,0	L

METRIC BANJO

OCCHIO A PRESSARE METRICO

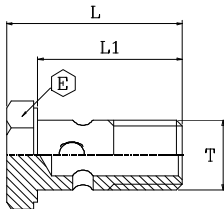


RNM

part nr. codice	hose ID			F	d		D		cut-off C	
	[in]	[mm]	size		[in]	[mm]	[in]	[mm]	[in]	[mm]
0450030308	3/16"	4,8	03	M8	0,12	3,0	0,55	14,0	0,83	21,0
0450030310	3/16"	4,8	03	M10	0,12	3,0	0,67	17,0	0,75	19,0
0450030410	1/4"	6,4	04	M10	0,16	4,0	0,67	17,0	0,99	25,0
0450030412	1/4"	6,4	04	M12	0,16	4,0	0,79	20,0	1,06	27,0
0450030414	1/4"	6,4	04	M14	0,16	4,0	0,95	24,0	1,06	27,0
0450030512	5/16"	8,0	05	M12	0,22	5,5	0,79	20,0	0,87	22,0
0450030514	5/16"	8,0	05	M14	0,22	5,5	0,95	24,0	0,94	24,0
0450030516	5/16"	8,0	05	M16	0,22	5,5	1,10	28,0	1,02	26,0
0450030518	5/16"	8,0	05	M18	0,22	5,5	1,26	32,0	1,14	29,0
0450030614	3/8"	9,5	06	M14	0,28	7,0	0,95	24,0	0,99	25,0
0450030616	3/8"	9,5	06	M16	0,28	7,0	1,10	28,0	1,02	26,0
0450030618	3/8"	9,5	06	M18	0,28	7,0	1,26	32,0	1,14	29,0
0450030818	1/2"	12,7	08	M18	0,37	9,5	1,26	32,0	1,14	29,0
0450030822	1/2"	12,7	08	M22	0,37	9,5	1,42	36,0	1,22	31,0
0450031022	5/8"	16,0	10	M22	0,47	12,0	1,42	36,0	1,22	31,0
0450031226	3/4"	19,0	12	M26	0,59	15,0	1,81	46,0	1,50	38,0
0450031630	1"	25,4	16	M30	0,79	20,0	2,13	54,0	1,69	43,0

METRIC BOLT

BULLONE FORATO METRICO



BFM

part nr. codice	T	L		L1		E		Press. Max	
		[in]	[mm]	[in]	[mm]	[in]	[mm]	[psi]	[bar]
1555110250	M10-1	0,95	24,0	0,77	19,5	0,55	14,0	4351	300
1555112312	M12-1,5	1,24	31,5	1,00	25,5	0,67	17,0	4351	300
1555114330	M14-1,5	1,34	34,0	1,12	28,5	0,75	19,0	4351	300
1555116400	M16-1,5	1,62	41,0	1,30	33,0	0,87	22,0	4351	300
1555118440	M18-1,5	1,75	44,5	1,44	36,5	0,95	24,0	3626	250
1555122460	M22-1,5	1,83	46,5	1,36	34,5	1,06	27,0	2901	200
1555126560	M26-1,5	2,21	56,0	1,79	45,5	1,26	32,0	2901	200
1555130560	M30-1,5	2,60	66,0	2,17	55,0	1,42	36,0	2175	150

Two copper washers for bolt must be ordered separately
 Le due rondelle di rame per bullone devono essere ordinate separatamente.